



GoldTop™ Assembly Instructions 14-256-1

DISASSEMBLY

1. Using the T-55 Torx bit provided, remove the friction plate. The plate will say left hand thread but the center bolt should be turned like a standard bolt – turn the T-55 Torx bit **COUNTER CLOCKWISE** while holding the friction plate from rotating. It will help to apply air pressure to the clutch while removing the friction plate.
2. Once the friction plate is removed, hand-tighten the black plastic cage on the left hand threaded bolt. If you applied air pressure in step 1 - remove it now.
3. Remove the Friction Facing Screws (1) with a T-27 Torx bit. Remove the lining and throw them away.
4. Remove the Aluminum Spring Housing (2). Use two flat screwdrivers to pry the Aluminum Spring Housing from the pulley and throw it away.
5. Remove the large Black Seal (3) and throw it away.
6. Remove the Retaining Ring (4) and throw it away.
7. Remove the Air Chamber Cap (5) and throw it away.
8. Remove the Air Cartridge Snap Ring (6) and throw it away.
9. Remove the Air Cartridge Assembly (7) and throw it away.
10. Remove the Bearing Nut with a 2" socket and throw it away. The pulley will now slide off the shaft.
11. Press out the bearing. Clean and inspect the pulley inside and out.
12. Clean and inspect the shaft inside and out. Clean and chase the threads on shaft.

INSTALLATION

1. Note: Bearing must be pressed in on the outer race.
2. Press the new bearing into the pulley. The 14-256 has two bearings in the kit and **may not** be used in place of the 14-256-1.
3. Install bearing shim & retaining ring (4).
4. Install pulley over the journal bracket.
5. With the shoulder of the nut facing toward the sheave bearing – torque to 125 Ft Lbs.
6. Apply o-ring lube to the three o-rings on the air cartridge assembly and install the new air cartridge assembly in the journal bracket.
7. Install the new snap ring over air cartridge assembly.
8. Assure that the threads are clean. Align the 8 holes in the GoldTop™ with the 8 holes in the pulley. Torque the 8 T-27 screws to 80 Inch Lbs. **DO NOT USE TAPERED STUDS.**
9. **The fan blade nuts should be torqued with no more than 35 Ft. Lbs.**

THE ENTIRE KIT MUST BE USED OR WARRANTY WILL BE VOID!

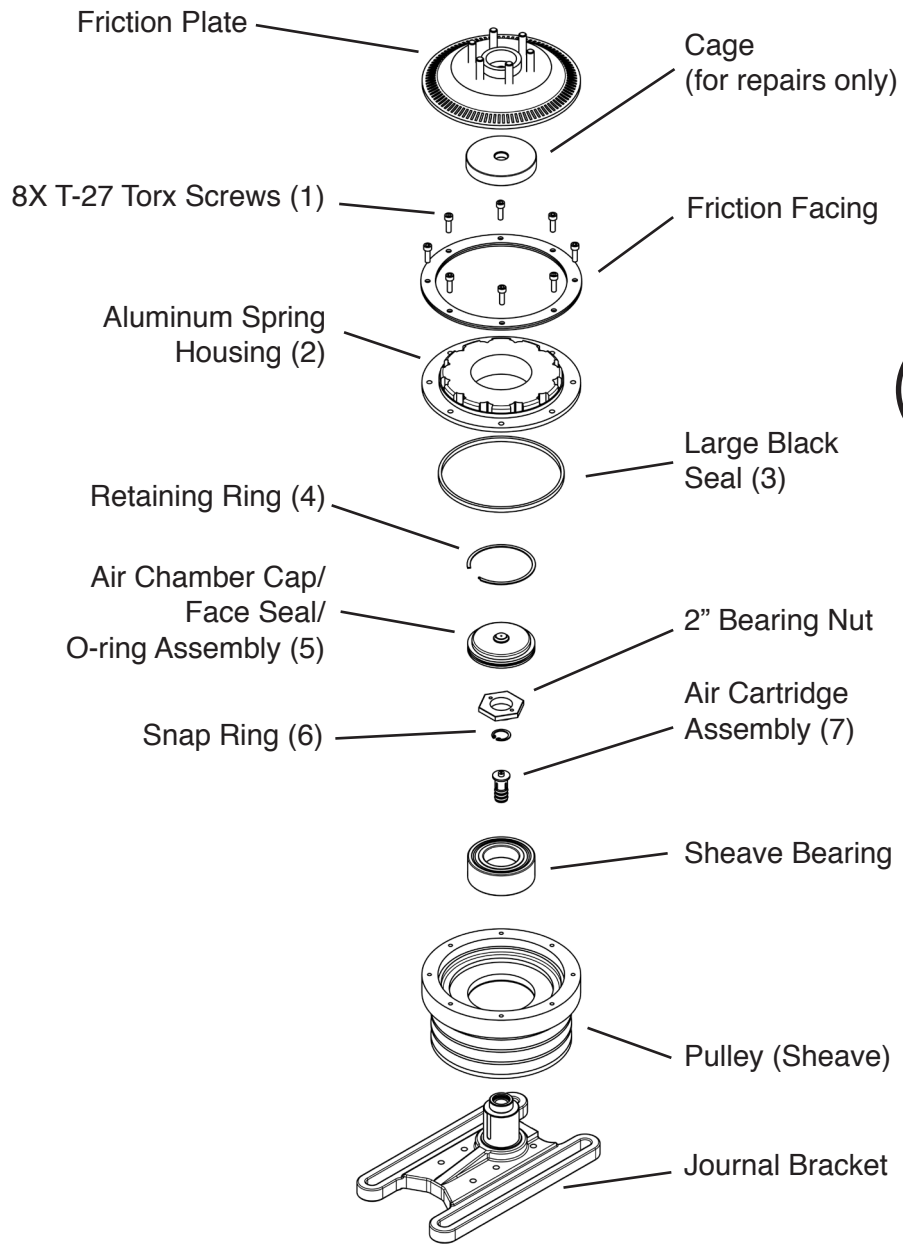
Patent(s) Pending. See www.kitmasters.com for updated list of applicable issued and pending patents.

Video demonstration available at www.kitmasters.com.

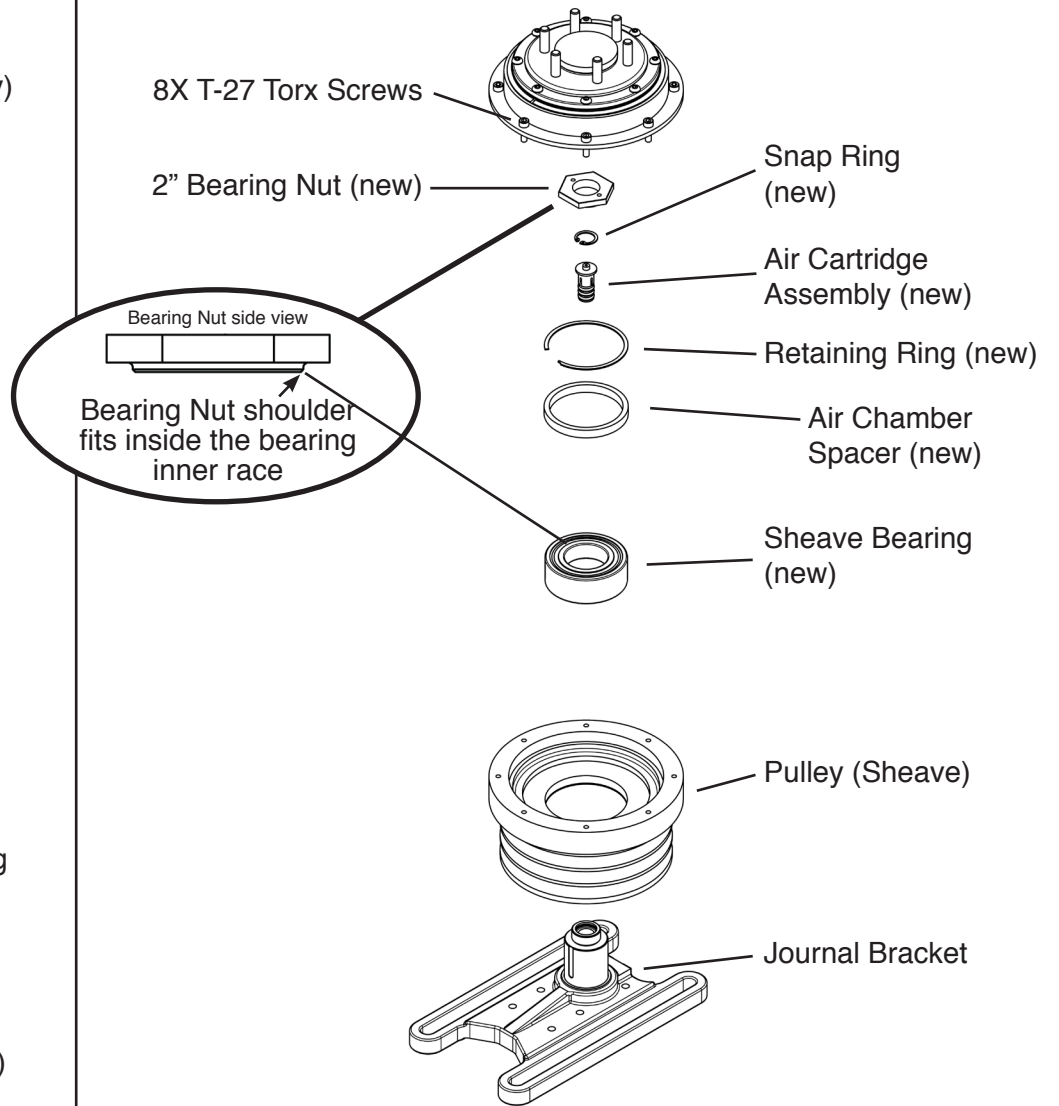
Instrucciones en Español en www.kitmasters.com.

For installation assistance, contact Kit Masters at (800)-810-9110

DISASSEMBLY



ASSEMBLY



KIT MASTERS

www.kit-masters.com