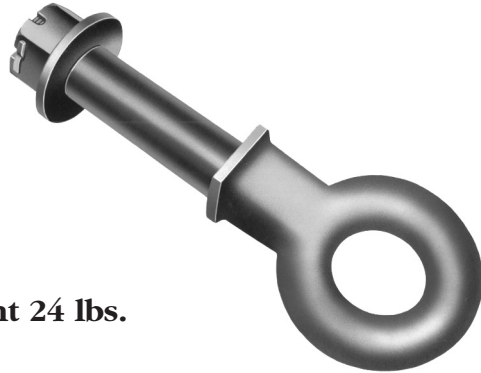




DB-1249-49

DB-1249-49 SPECIFICATIONS



Weight 24 lbs.



3" I.D. eye forged steel drawbar with induction hardened wear area. 1.63" diameter section, 2" O.D. shank with nut, washer, and cotter pin.

9,000 lbs. Maximum Vertical Load
45,000 lbs. Maximum Gross Trailer Weight

NOTE: When used for hinged tongue trailer applications where maximum vertical load cannot exceed 500 lbs., the maximum gross trailer weight is 85,000 lbs.

IMPORTANT SAFETY INFORMATION

Maintain adequate vertical (tongue) load to adequately control the trailer (generally 10%), but do not exceed the capacity ratings at right.

This equipment must not be used or maintained in a careless manner.

DURING OPERATION

1. Be sure the drawbar size is compatible with the coupling device on the tow vehicle.
2. Do not damage the coupling components. Be particularly careful during coupling and uncoupling.
3. Inspect the coupling device on the tow vehicle for proper operation. Do not use any coupling device that does not operate properly.
4. Other steps and inspections are also required. Consult OSHA and D.O.T. regulations and American Trucking Association for complete coupling and uncoupling procedures. These cover items such as cargo securement, brakes, lights, safety chains, and other important requirements.

GENERAL INFORMATION:

1. Do not modify or add to the product.
2. Wear safety goggles during installation and removal.
3. Never strike any part of the item with a steel hammer.
4. Do not weld on this product.

This product is covered by Holland's Commercial Products Warranty. Holland reserves the right, without giving prior notice, to change specifications and dimensions as designs are altered or improved.

TOWING APPLICATIONS:

Trailers, full trailers (including doubles) and equipment designed for over-the-road towing within the stated capacities. For off-road applications, reduce the above capacities by 25%.

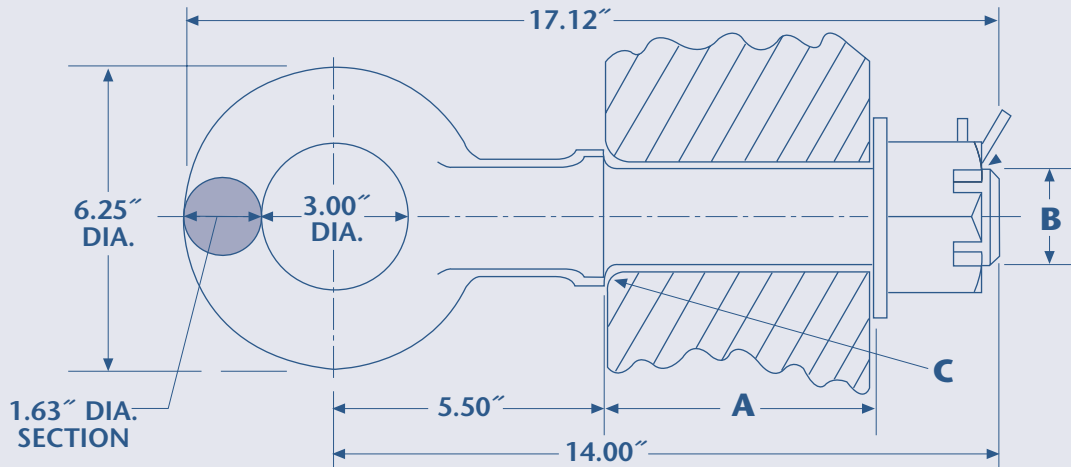
MOUNTING:

1. Use a mounting structure of sufficient strength to support the rated capacity of the drawbar in accordance with SAE J849 and SAE J847, respectively.
2. Refer to the drawing on the reverse for proper mounting dimensions (dimensions A, B and C).
3. To mount drawbar to mounting structure, remove cotter pin (XB-121), nut (XB-T-316-A) and washer (XB-T-318) from drawbar (XA-1249-49-10). Insert drawbar into mounting structure and install washer and nut on the drawbar. Torque the nut to 450-650 ft-lbs. and insert cotter pin through castellation in the nut and hole in the drawbar shank. Spread the cotter pin.

OPERATION AND MAINTENANCE:

1. Regularly inspect the drawbar for wear and damage. If wear exceeds 1/8" (.125") from the original surface profile, replace the drawbar.
2. Check the drawbar nut for proper torque.

DB-1249-49

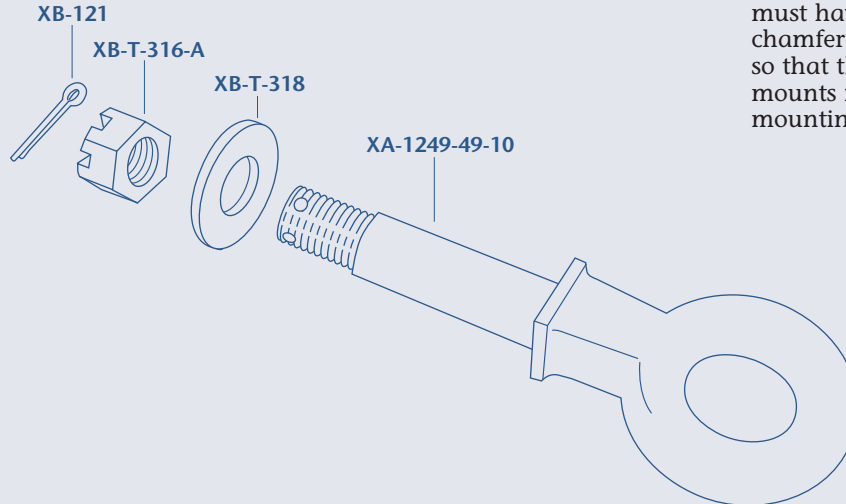


ALL DIMENSIONS SHOWN ARE NOMINAL

MOUNTING DIMENSIONS

A	Mtg. Width	6"
B	Hole Size	2.03"
C*	Chamfer	.38" x 45°

***Note:** The mounting surface must have an adequate chamfer so that the drawbar mounts flush with the mounting surface.



Copyright © April 2002 • The Holland Group, Inc.

Holland USA, Inc. Facilities:

Denmark, SC Muskegon, MI
 Dumas, AR Warrenton, MO
 Holland, MI Whitehouse Station, NJ
 Milpitas, CA Wylie, TX

Ph: 888-396-6501 Fax: 800-356-3929

Holland International, Inc.

Holland, MI
 Phone: 616-396-6501
 Fax: 616-396-1511

Holland Hitch of Canada, Ltd.

Woodstock, Ontario • Canada
 Phone: 519-537-3494
 Fax: 800-565-7753

Holland Equipment, Ltd.

Norwich, Ontario • Canada
 Phone: 519-863-3414
 Fax: 519-863-2398

Holland Hitch Western, Ltd.

Surrey, British Columbia • Canada
 Phone: 604-574-7491
 Fax: 604-574-0244